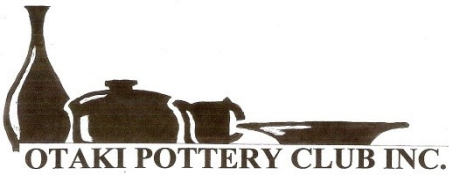


# Otaki Potters

October 2017



P O Box 36  
OTAKI 5512  
Ph. 06 364 7308 x 711  
[www.otakipotteryclub.org](http://www.otakipotteryclub.org)

## PRESIDENT'S REPORT

The year is running away on us! We are now in the last term of the year. Everyone is too busy!

The travellers are returning, Margaret from Paris and London, Caitlin from Vietnam, Brent from South America and Stephanie from China and India. Welcome back! We missed you!

Adult classes are underway. We will send out an evaluation form to everyone who has been part of a class this year. We plan to do this online to make it easier. We will have hard copies available for those who don't have access to the internet. We need your feedback to plan for next year.

Unfortunately we have had to cancel the Public Raku for this year. We couldn't get a convenor. We know a lot of people look forward to the event and it's our one opportunity to involve the community in a hands-on clay activity. Let's hope someone will step up in 2018.

It's full steam ahead for the Festival of Pots and Garden Art. Please register your interest to exhibit by November 30<sup>th</sup>. Those who do this will have priority. [www.festivalpots.com](http://www.festivalpots.com). ANY potter is welcome to exhibit in the Festival. Spread the word!

Thank you to Murray Hopping for organising the demonstrations to be held at the Festival. Please let him know if you are available. Stacey Young is handling the Club's website and social media. (Anna Wood manages the Festival website and email address [festivalpots@gmail.com](mailto:festivalpots@gmail.com))

We are starting to make up the rosters for people to help at the Festival. The roster for the café/kitchen is on the tool cupboard door in the Club Room. Please make Paula's day by putting your name on the list or give her a ring. (027 247 7488). Lynne Corkin will be shoulder tapping members to assist on the sales desk. I'm doing the roster for cleaning so if you are prepared to come along at 9am and vacuum and clean toilets on one or two days during the Festival let me know.

Cards, posters and car window flyers will be available in the rooms this week. We need all members to help get the word out there; so if you are travelling how about dropping off some cards and a poster to the odd café or space where people will see them. It would be really helpful if you could text or email me with locations outside the Kapiti area where you have left promotional material. I am still looking for someone help me with promoting the Festival.

I am looking for a suitable sound system (outdoor) for the opening night. Please let me know if you can help.

Hams and meat for Christmas are available again this year. I'll leave the details in the rooms or contact me. Payment with order, please make cheques out to "cash".

We have one more cleaning bee on December 9<sup>th</sup>. If you were a member prior to the 1<sup>st</sup> July you are required to do one cleaning bee a year or pay \$30 unless you have applied this year, in writing, for an exemption.

## Dates to Remember

Festival of Pots Registration of Interest: 30 November  
Club Christmas Party: 24 November  
Cleaning Bee: 9 December



*Presidents Report Cont.*

Thank you to David Simmonds who has offered to look after the heat pumps in the Club Room. David also makes sure that the vacuum cleaner is regularly serviced.

The committee has decided to replace the small Cobcraft kiln so it's for sale. 1.2 phase so it's suitable for home use. Contact me or Brent if you are interested.

The Kapiti Arts Trail is a great opportunity to see what other people are doing, let's get out there and be inspired!

HAPPY POTTING.



**You are invited to exhibit!**

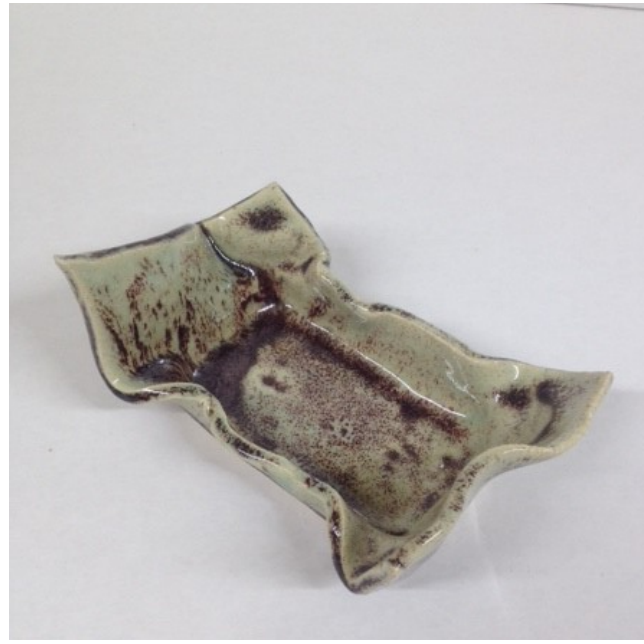
# **Festival of Pots & Garden Art 2018**

**Saturday 20th - Sunday 28th January**



[www.festivalpots.com](http://www.festivalpots.com)  
**Anam Cara, 150 Rangiora Rd, Otaki**





# CLUB EVENTS & NOTICES

Club glazes are only to be used on bisque ware that has been fired in the club kilns. If you have any queries relating to this please discuss with Rod.

When using club glazes please follow instructions taped to the bench. It is essential that you put buckets away and clean up after yourself including mopping the floor. Your cooperation will be appreciated.

If you are interested in a qualification in Ceramics talk to Jenny Turnbull about the Certificate/ Diploma course in ceramics.

Christmas Hams and meat. See info in rooms or contact Rod.

Cleaning Bee December 9<sup>th</sup>. See the list in the rooms or contact Stephanie.

## OPC Christmas Party

Friday November 24<sup>th</sup> at Slapsy's (previously Byrons), Otaki Beach.

6.30pm for drinks, buffet dinner 7pm.

\$40 per head.

Please add your name and the number coming to the notice on the Club newsboard or email Caitlin: otakipotteryclub@gmail.com

Payment either internet asap or in rooms post-box

For Sale: 3.5cu ft Cobcraft kiln. 1.2 phase. 8KW; as is. Members have first option. Contact Rod or Brent.

## Management Committee

**Patron** Grant McNab

**President** Rod Graham  
rodgraham@xtra.co.nz 027 4457545

**Vice President** Brent Craig  
brent@awatealodge.co.nz  
027 2427572 | 04 293 2404

**Secretary** Caitlin Taylor  
otakipotteryclub@gmail.com  
021 390888 | 06 364 2191

**Treasurer** Ann Porter  
daveann@clear.net.nz  
021 460 942 | 04 9021647

**Assistant Treasurer**  
Lynne Corkin  
linnygin@gmail.com  
021 1494081

## Committee

Margaret Hunt 06 364 8053  
mhunt@xtra.co.nz

Murray Hopping 04 9042525  
murrayhopping@gmail.com

Russell Kitto 0274 504 268  
russ.flo@xtra.co.nz

Beryl Rowe 06 364 3030

Stephanie Tidman 021 2677052  
geeup1@clear.net.nz

## Other Contributors

Club Library & Rooms: Kaye Stead  
DVDs and Enrolments: Margaret Hunt  
Orientation: Jude Whitaker  
Newsletter: Anna Wood  
Website -  
Cleaning Bees: Beryl Rowe  
New members: Stephanie Tidman  
Property Maintenance: Russell Kitto  
Clay -  
Keys: David Simmonds

